

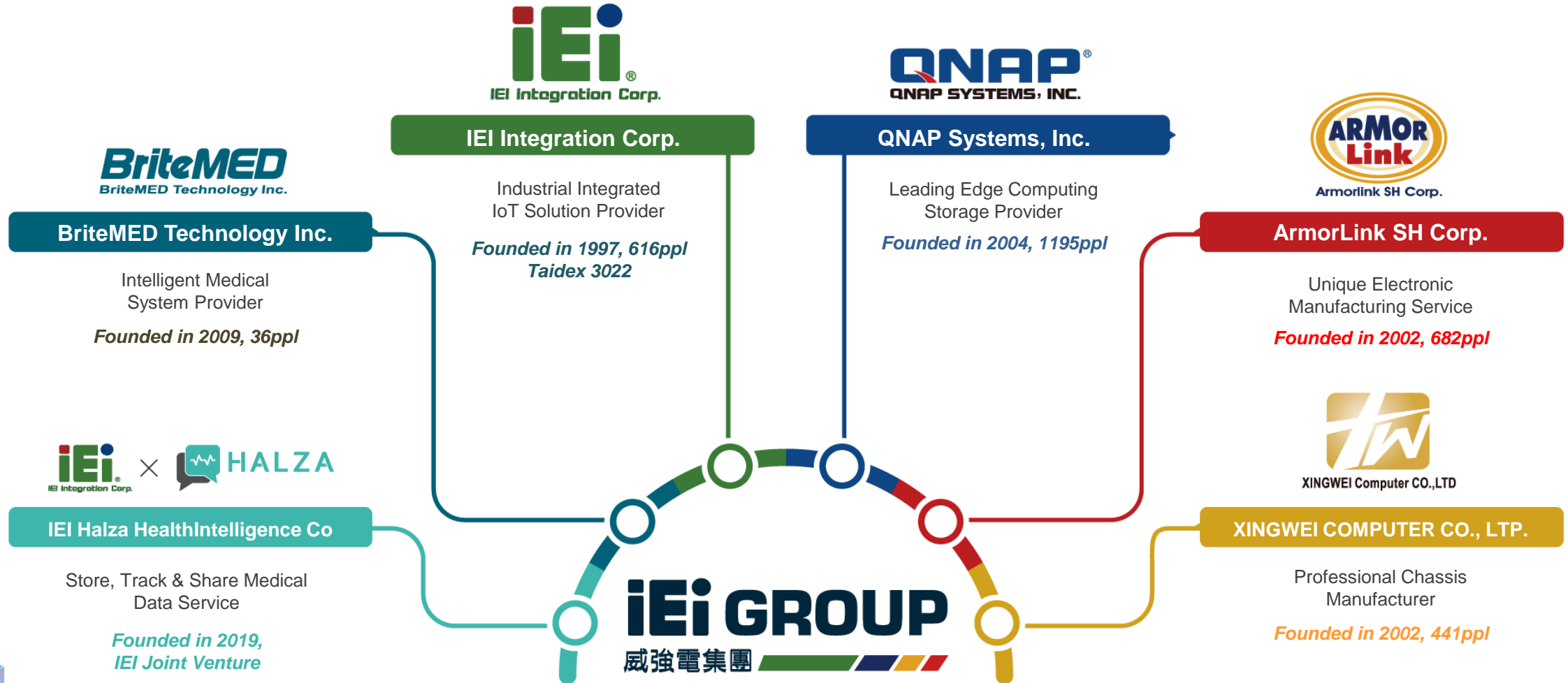
Partner Presentation

Scalable Edge Computing Solutions with PUZZLE Developer Kit

Ivy Jiang Yu, IEI



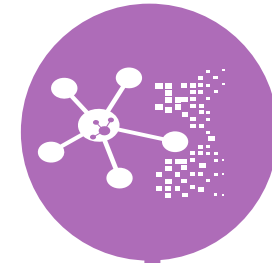
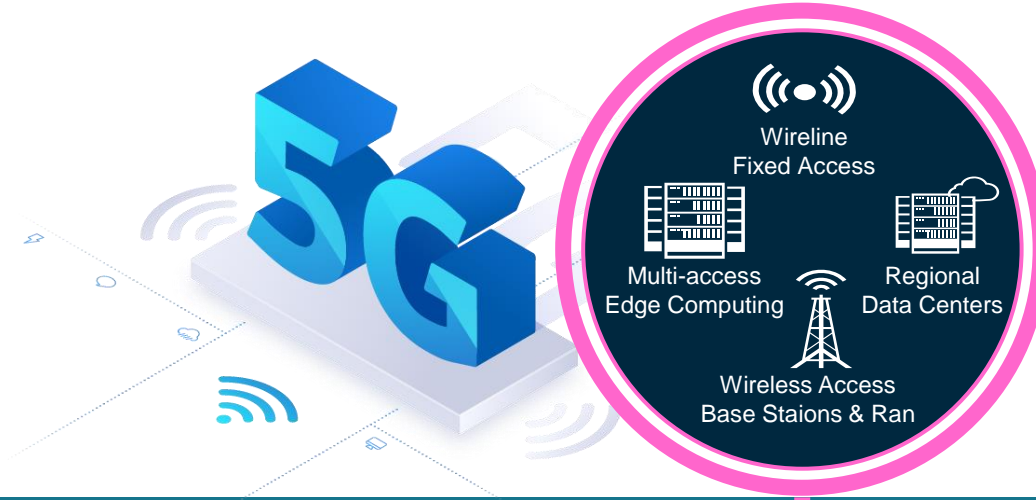
» Iei Group Overview



20 offices in 14 countries, 3,000 employees USD 600M+ sales turnover



» IEI's 5G AIoT Edge to Core Network Solution



AIoT Edge Computing



Edge Computing

AI Ready Solution

Industrial Switch

On-Premise Edge



5G Private Network Gateway

uCPE

AI Edge Server

5G Private Network



Cybersecurity

Network Infrastructure

5G MEC

Core Network



5G CU

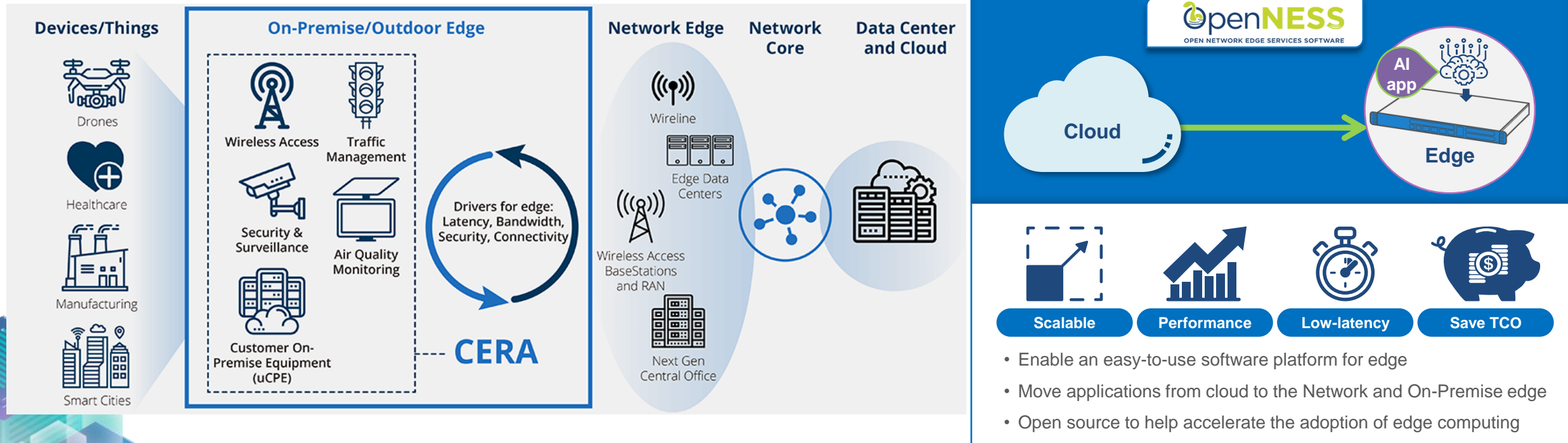
5G DU



» Intel® Converged Edge Reference Architecture (CERA)

CERA unifies and converges IOT with wireless infrastructure network technology to simplify workload convergence at the edge while densifying wireless networks.

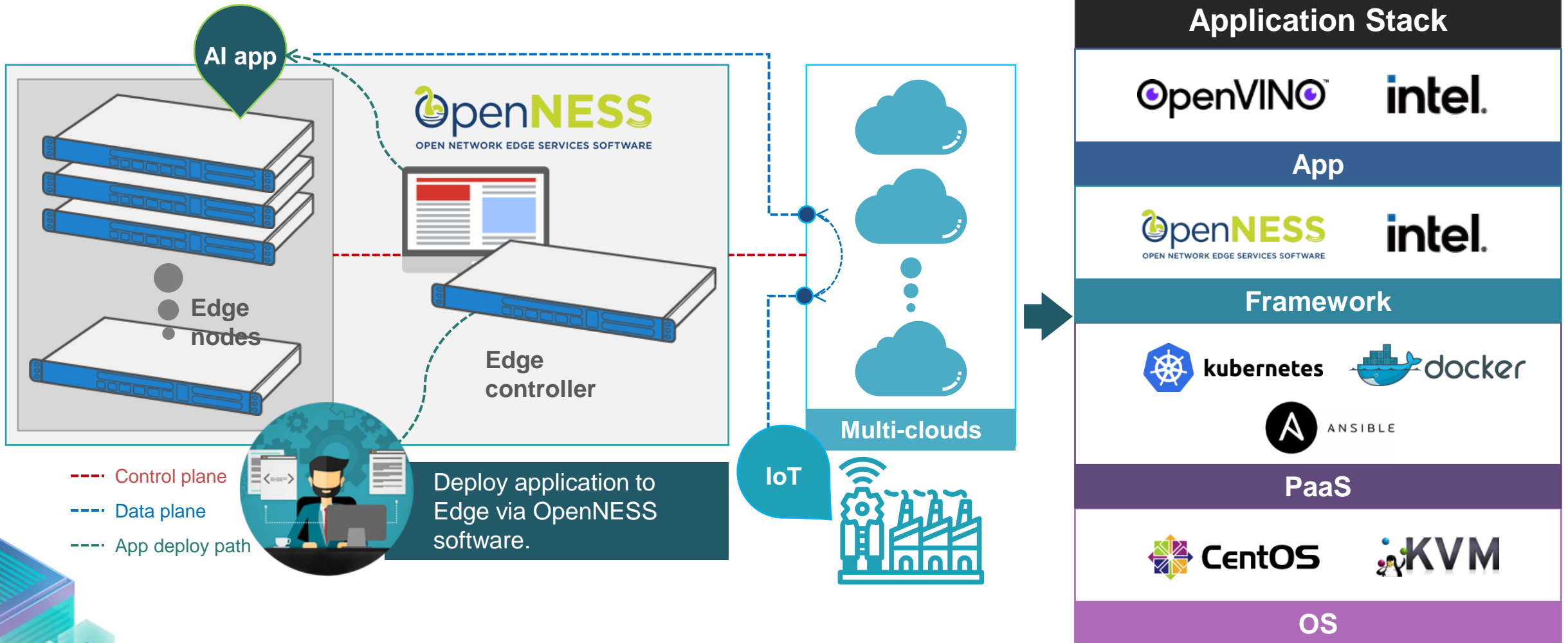
CERA offers pre-validated blueprints that combines commercially-hardened hardware and software that accelerate design and development of edge solutions that support diverse workloads in an unified architecture. CERA blueprints leverage Open Network Edge Services Software (OpenNESS) and OpenVINO to optimize networking and AI applications at the edge.



Intel and the Intel logo are trademarks of Intel Corporation or its subsidiaries.



» Scalable & Cloud-base Edge Application



Intel, the Intel logo, and OpenVINO are trademarks of Intel Corporation or its subsidiaries.

IEI PUZZLE Dev. Kit

Feature

- Intel® Xeon D-2100 series processor (codenamed Skylake-D) with Intel® QuickAssist Technology (Intel® QAT)
- 8 x 288-pin RDIMM DDR4 2666MHz, RDIMM up to 256GB / LRDIMM up to 512GB
- Supports 1x PuIM modules series NICs
- Pre-validated with Open Network Edge Services Software (OpenNess) & Open Visual Inference and Neural Network Optimization (OpenVINO™) toolkit
- Compliant with Intel® Select Solution for uCPE & ADVA

Application

- Universal Customer Premise Equipment (uCPE)
- AI & Edge Computing

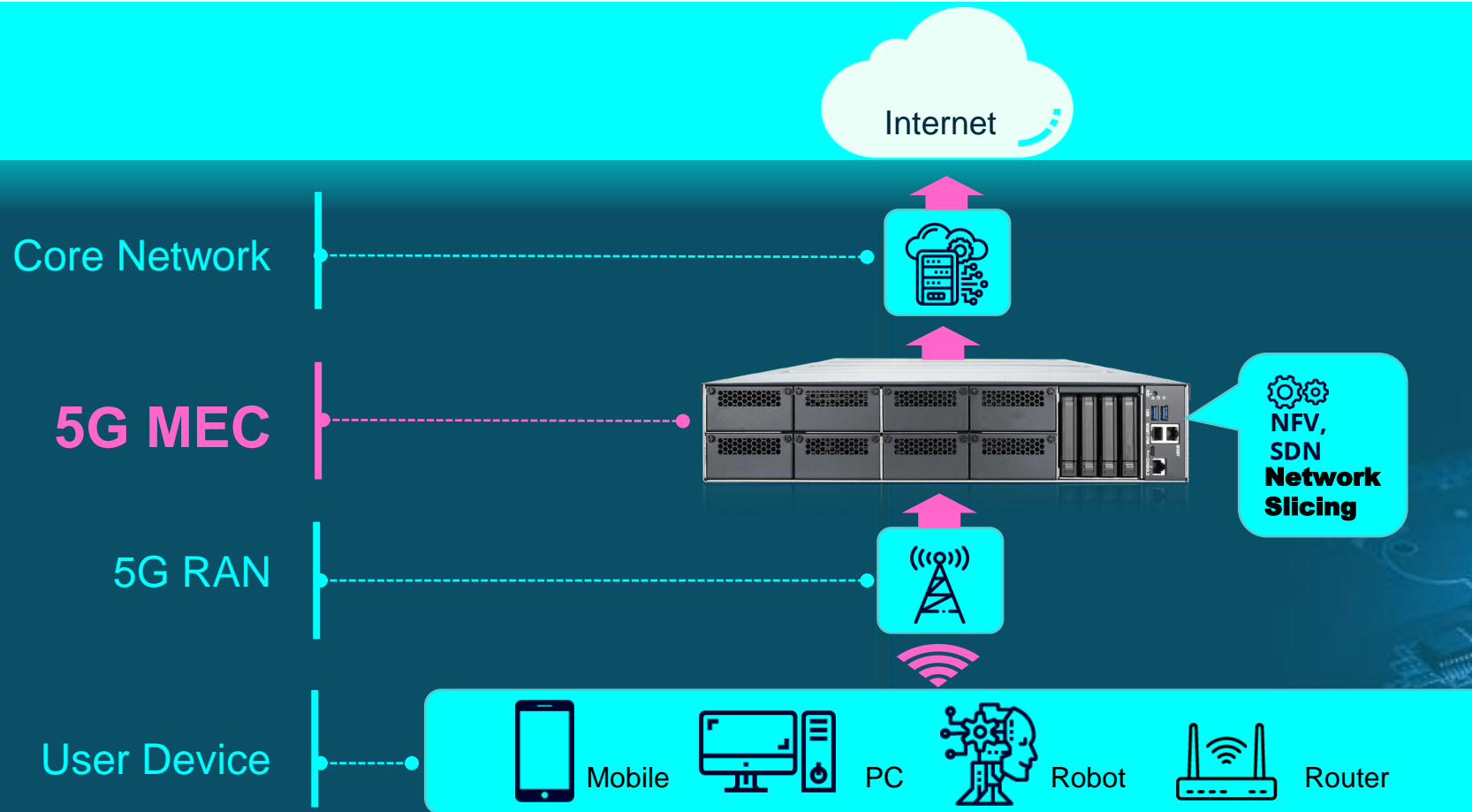


Intel, the Intel logo, Intel Xeon, and OpenVINO are trademarks of Intel Corporation or its subsidiaries.

» IEI's PUZZLE-IN005 Aim for 5G MEC

5G MEC Solution

5G MEC is a network solution to providing IT service and telecommunication network at the edge. The PUZZLE-IN005 brings services closer to users, and provides ultra-low latency, high bandwidth, virtualization application and reliable network solution.

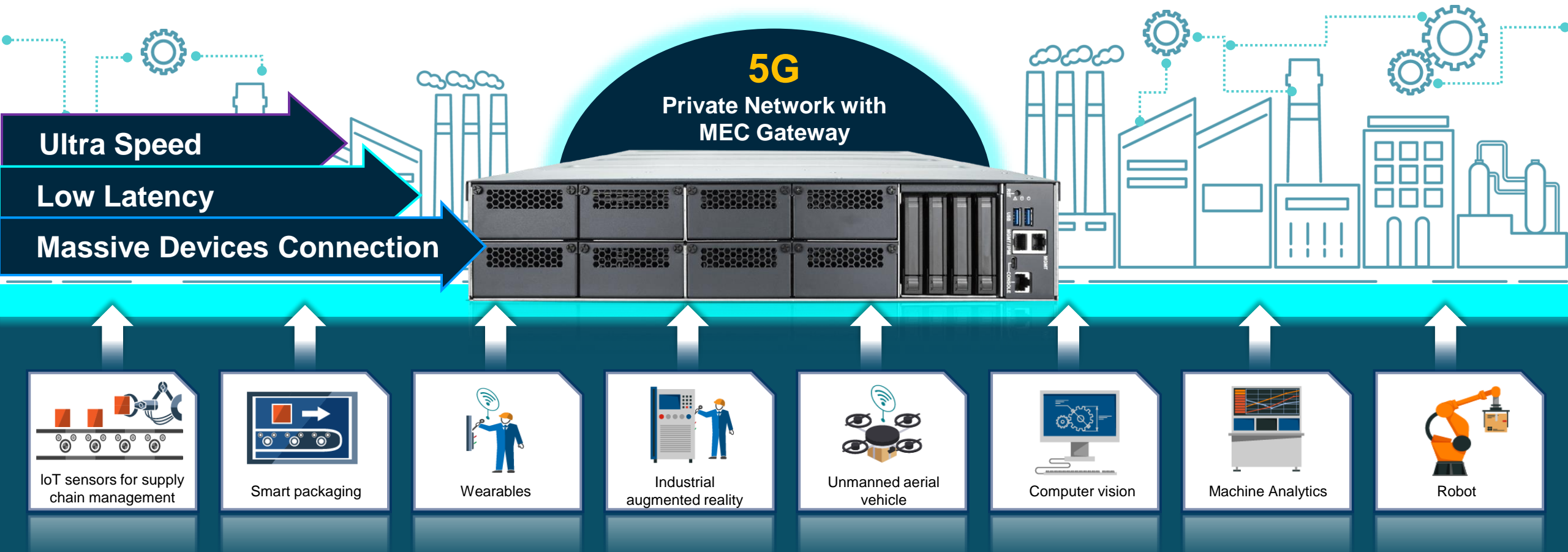


» Private 5G in Factory Automation

5G Smart Factory

Factory automation: Implement industrial control and automation systems through Low Latency, increased connection speed, and support for Massive Devices Connection.

Private network architecture: Private 5G base stations and edge devices connect all equipment in the factory through wired and wireless connections to construct an efficient and highly reliable factory environment



» Conclusion of Advantages of IEI PUZZLE-IN005

Intel®
QuickAssist
Technology

Boost Encryption and
Compression
Performance



Expansion

Diverse Selections,
Different Combinations

PCI
EXPRESS
4.0

PCIe 4.0

Double Bandwidth,
Double Speed

nvm
EXPRESS

NVM Express

U.2 nVMe provide
extremely high speed of
storage.

PUZZLE-IN005

Feature

- Dual Intel® 3rd Gen Xeon® Scalable processors (code named Ice Lake - SP)
- 20 x DDR4 R-DIMM / LR-DIMM memory
- 8 network module with PCIe gen4 x8 signal
- Intel® Quick-Assist Technology
- 4 x U.2 (PCIe x4) 2.5" SSD compatible with SATA
- 1+1 1200W CRPS redundant power supply
- 4+1 hot swappable system fans

Application

- Universal Customer Premise Equipment (uCPE)
- Multi-access Edge Computing (5G MEC)
- AI computing server



intel.
XEON™

Intel, the Intel logo, and Intel Xeon are trademarks of Intel Corporation or its subsidiaries.

Learn more

<https://www.ieiworld.com/puzzle-dev-kit/en/>

Disclaimer

Intel, the Intel logo, and other Intel marks are trademarks of Intel Corporation or its subsidiaries.

Other names and brands may be claimed as the property of others.

The background features a complex, abstract pattern of thin, overlapping lines in shades of blue, purple, and gold, creating a sense of motion and depth. A solid teal rectangular box is positioned on the left side of the frame, containing the text.

Thank you
for watching!