

Breakout Session

12th Gen Intel[®] Core[™] Processor PICMG 1.3 Single Host Board

Russell Cheng, Portwell



Portwell is dedicated to providing innovative and high-quality AIoT turnkey solutions to support our customer's business goals. In addition to our extensive and scalable list of products, we offer a wide range of technology services that are designed to help our customers develop and deploy their applications with ease so that they can achieve and expand their industry leadership.

In 2017, Portwell Inc. was acquired by Posiflex Technology, Inc., a global leader in POS solution design and manufacturing. This has established Portwell as a major worldwide supplier of specialty computing application platforms.



Headquarter : Taipei, Taiwan

Founded : 1993

OTC Listed : 2001 ~ 2017

Capital : NT\$ 9.8B

Consolidate Rev. : ~ US\$176M₍₂₀₂₀₎/~ US\$189M₍₂₀₂₁₎

Employee : ~ 720 WW



Global Organizations



-  **Headquarters / Manufacturing Sites**
-  **Subsidiaries with Services (Tech. / Assembly & Sales)**
-  **Subsidiaries (Sales only)**



Portwell, Inc. Headquarters

No. 242, Bo' Ai St., Shu-Lin Dist.
New Taipei City 238, Taiwan
Tel: +886-2-7731-8888
Fax: +886-2-7731-9888
E-mail: info@portwell.com.tw
www.portwell.com.tw

American Portwell

(Fremont, CA)
Tel: +1-510-403-3399
E-mail: info@portwell.com
www.portwell.com

Portwell UK Ltd.

Tel: +44(0)1235-750-760
E-mail: info@portwell.eu
www.portwell.eu

Portwell Japan, Inc.

(Tokyo)
Tel: +81-3-6902-9225
E-mail: info@portwell.co.jp
www.portwell.co.jp

Portwell Japan, Inc.

(Osaka)
Tel: +81-6-4807-7721
E-mail: info@portwell.co.jp
www.portwell.co.jp

European Portwell

Tel: +31-252-620790
E-mail: info@portwell.eu
www.portwell.eu

KIOSK Embedded Systems GmbH

Tel: +49-8152-3962-500
E-mail: info@portwell.de
www.portwell.de

Shanghai Portwell

Tel: +86-21-5771-2505
E-mail: info@portwell.com.cn
www.portwell.com.cn

Portwell Korea, Inc.

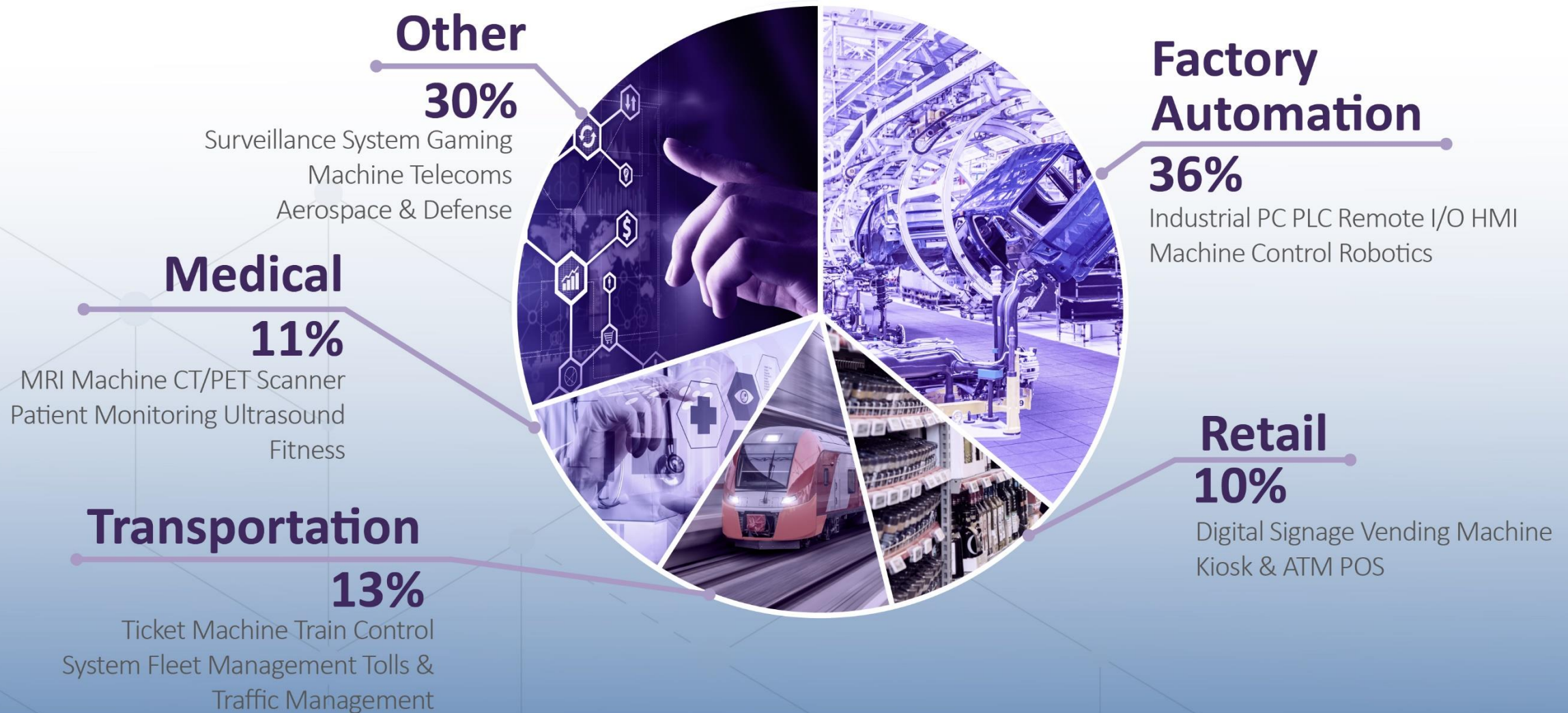
Tel: +82-31-450-3043
E-mail: info@portwell.co.kr
www.portwell.co.kr

Portwell India Technology

Tel: +91-80-4168-4255
E-mail: enquiry@portwell.in
www.portwell.in

Industrial Applications

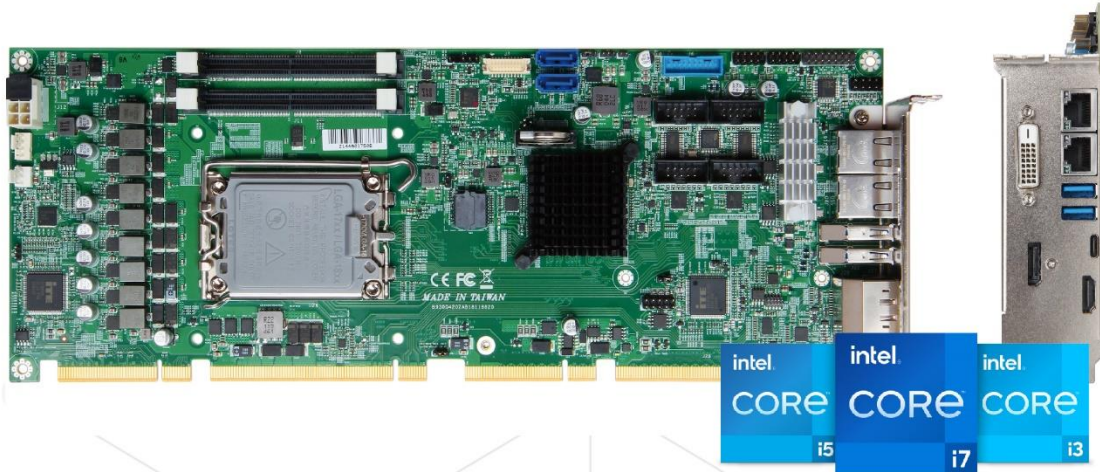
Single Board Computer, Standalone Board & Computer-On-Module





12th Gen Intel® Core™ Desktop Processor
PICMG 1.3 Single Host Board
ROBO-8116G2AR Key Features

ROBO-8116G2AR Quick Guide

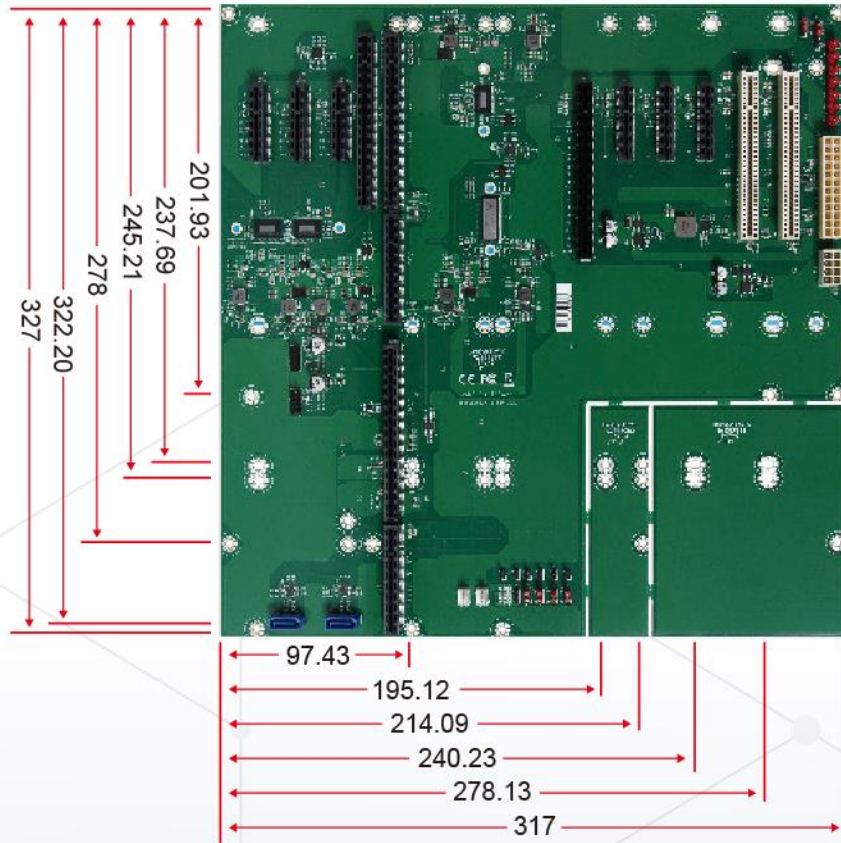


12 th Gen Intel® Core™ Desktop Processor	R680E/Q670E	M.2 Type M
2x DDR5 slot	4 x SATA III	Dual Giga LAN
DP	DVI	HDMI
4x UART	1x USB3.2 Type C	4x USB 3.2

- ✦ 12th Gen Intel® Core™ Desktop Processor
- ✦ Support M.2 Type M(2280) socket
- ✦ DVI-D , HDMI , DP display output
- ✦ Target Applications for Automation, Network and Medical
- ✦ From CPU: 1x PCIe x16 or 2x PCIe x8 by jumper / BIOS
- ✦ From PCH: 1x PCIe x4 or 4x PCIe x1 by different BIOS support
- ✦ 4x PCI devices at 32bit 33MHz

Intel, the Intel logo, OpenVINO, the OpenVINO, and other Intel marks are trademarks of Intel Corporation or its subsidiaries.

BP Support



PBPE-10P2

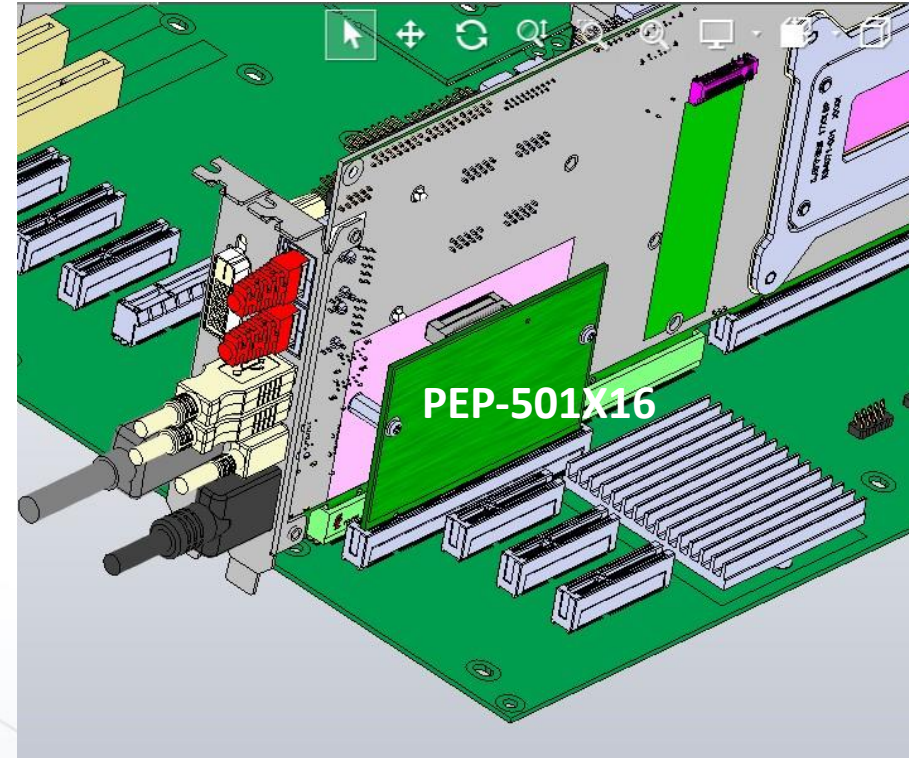
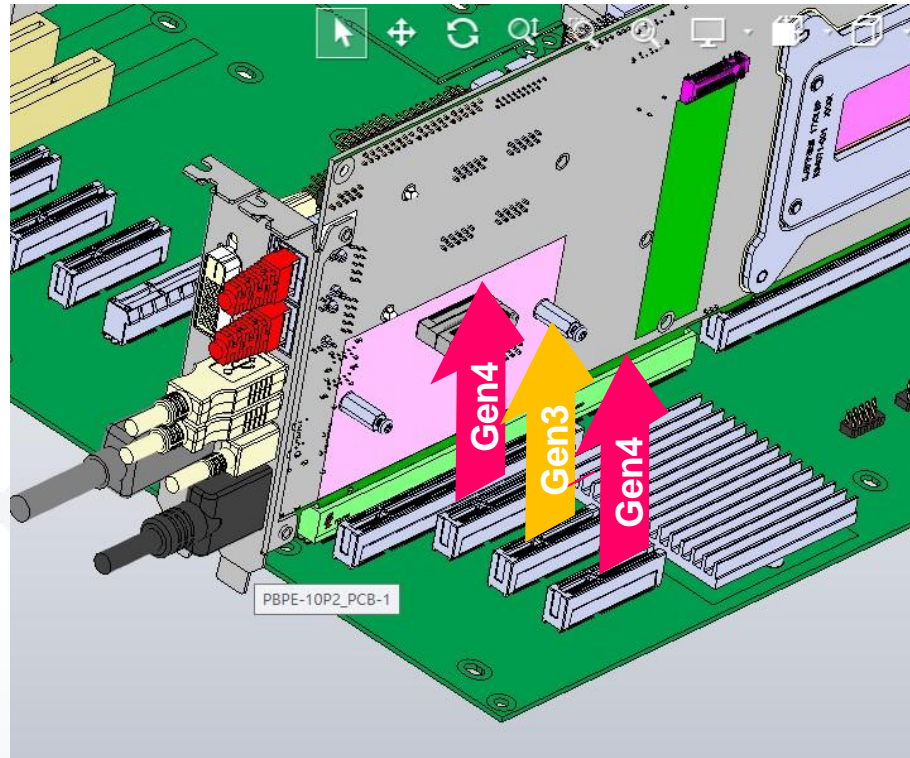
10-slot [PCIe x16 (1), PCIe x4 (3, x4 signal), PCIe x4(3, x1 signal), PCI(2)]

- Fit for 4U Chassis
- Four USB ports
- Two SATA ports
- Support PCIe Gen5 with ROBO-8116 series

✦ Support 1x PCIe x16(Gen5) / 3x PCIe x1(Gen4)

✦ Support 2x PCIe x4(Gen4) / 1x PCIe x4(Gen3) with PEP-501X16

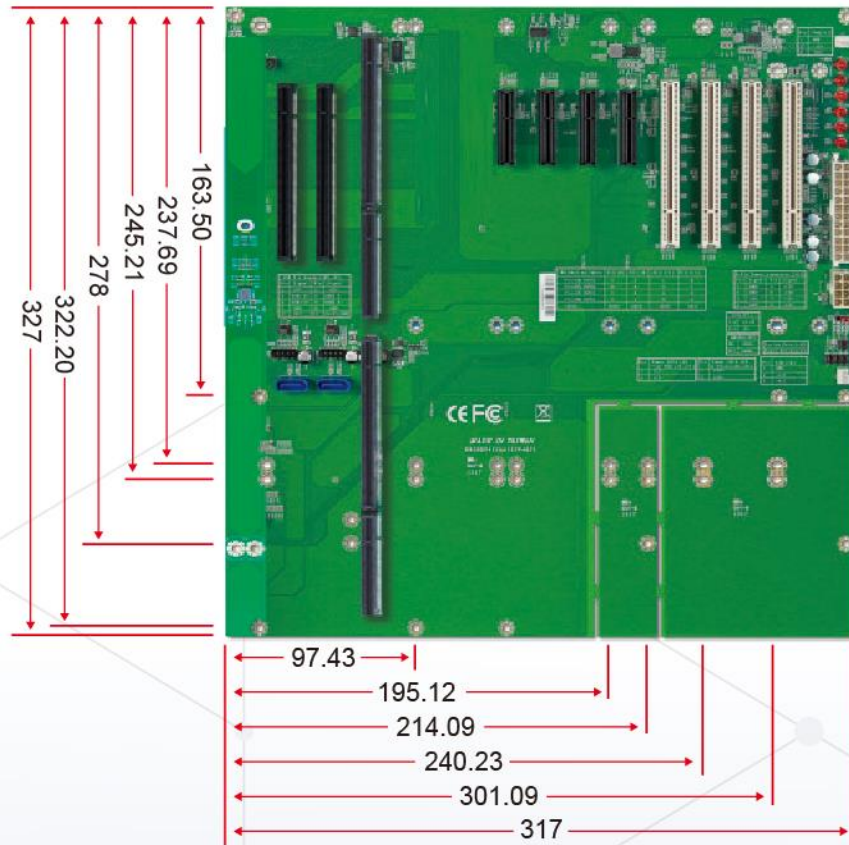
PEP-501X16 Mechanical Design



2x PCIe x4(Gen4) / 1x PCIe x4(Gen3) with PEP-501X16

J6	PCIe x4 Slot (Gen4, From CPU)
J7	PCIe x4 Slot (Gen3, From PCH)
J8	PCIe x4 Slot (Gen4, From PCH)

BP Support



PBPE-11P4

11-slot [PCIe x16 (2, 1x16 or 2x8 signal), PCIe x4(4, x1 signal), PCI(4)]

- Fit for 4U Chassis
- Four USB ports
- Two SATA ports
- Support PCIe Gen5 with ROBO-8116 series

- ✦ Support 1x PCIe x16(Gen5) or 2x PCIe x8(Gen5) select by BIOS
- ✦ 1x PCIe x4 or 4x PCIe x1 select by BIOS

Performance

12th Gen - S Overview

Processor block diagram



Embedded DisplayPort 1.4b



x4 DDI

DP 1.4a/HDMI 2.0b



x12 PCIe 4.0



Discrete Intel® Wi-Fi 6E

Integrated Intel® Wi-Fi 5



Intel® LAN 2.5GbE with TSN

intel

12th Gen Intel® Core™

- 10nm Intel Core S Processor
- PCIe Gen5 support
- Up to 16Cores
- Up to DDR5 – 4800 support
- USD3.2 Gen2x2 20G support

x8 DMI 4.0

600 Series Chipset

DDR4/5

2CH/2DPC

x16 PCIe 5.0

x4 PCIe 4.0

USB 3.2 Gen 2x2 (20 Gb/s) ports

USB 3.2 Gen 2x1 (10 Gb/s) ports

USB 3.2 Gen 1x1 (5 Gb/s) ports

Discrete Thunderbolt™ 4

x16 PCIe 3.0

SATA 3.0

eSPI SPI SMBus HD Audio, MIPI SoundWire

Not all features are supported in every operating system.
Not all features are available on all SKUs.

Comparison

Comparison

MODEL	ROBO-8116G2AR	ROBO-8115VG2AR
Form Factor	PICMG1.3	PICMG1.3
CPU	Intel® Core™ i3/i5/i7/i9/ Pentium®/Celeron®	Intel® Xeon® W/ Core™ i3/i5/i7/i9/Pentium®/Celeron®
Chipset	Intel® R680E	Intel® W480E
Memory	2 x DDR5 ECC SODIMM up to 64GB	4 x DDR4 ECC DIMM up to 128GB
Expansion	1x PCIe x16 slot or 2x PCIe x8 slots or 1x PCIe x16 slot or 4x PCIe x4 slots	4x PCI slots 1x PCIe x16 slot or 2x PCIe x8 slots or 1x PCIe x8 slot or 4x PCIe x4 slots
Display	DVI-I / DP	DVI-I / HDMI
Audio	Realtek ALC888S HDA codec	Realtek ALC888S HDA codec
LAN	2x GbE	2x GbE
Serial Port	2x RS-232 ports 2x RS-232/422/485	2x RS-232 ports 2x RS-232/422/485
USB	1x USB3.2 Gen2x2 2x USB3.2 Gen2 2x USB3.2 Gen1 4x USB2.0	6x USB3.2 Gen2 8x USB2.0
Storage Devices	4x SATA III 1x M.2 Type M 2280	5x SATA III 1x M.2 Type M 2280
GPIO	8 bit	8 bit
Others	N/A	PS2/KB & MS
Dimension	338.5 x 126.39mm	338.5 x 126.39mm

1. Support DDR5 4800 MHz SODIMM up to 64GB
2. Support PCIe Gen5 performance
3. Support DVI-D / HDMI /DP display output on Bracket
4. Support Dual 2.5G Lan
5. Support USB3.2 Gen 2x2 Type C

Portwell Software Value (PET)

Portwell Software Value - PET

PET : Portwell Engineering Toolkit

The name of the Portwell API(Application Programming Interface). A bridge to simplify and enhance H/W & S/W application implementation efficiency.

What PET do ?

- ✦ Hardware monitor
- ✦ Fan control
- ✦ GPIO control
- ✦ WDT
- ✦ SMBus
- ✦ I²C



PET_4.4.31

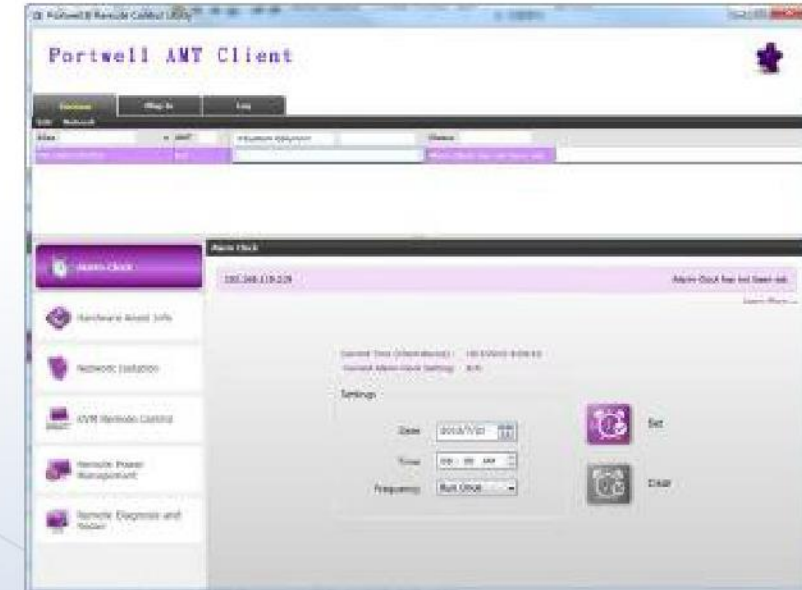
Portwell Software Value - PAC

PAC : Portwell AMT Client

A management program which support the newest version of the Intel AMT (Active Management Technology).

What PAC do ?

- ✦ Remote power on/off
- ✦ OS independent KVM
- ✦ Network isolation
- ✦ Remote Diagnosis and repair
 - reboot to bios
 - reboot to CDROM
 - boot to user selected OS image



Success Story / Application

Application-Automation

Industrial automation control

Key feature for IAC:

4x UART

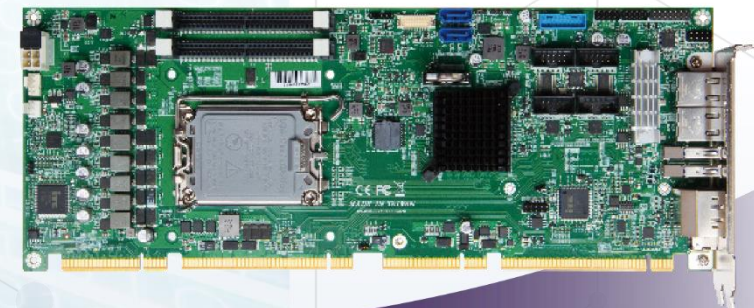
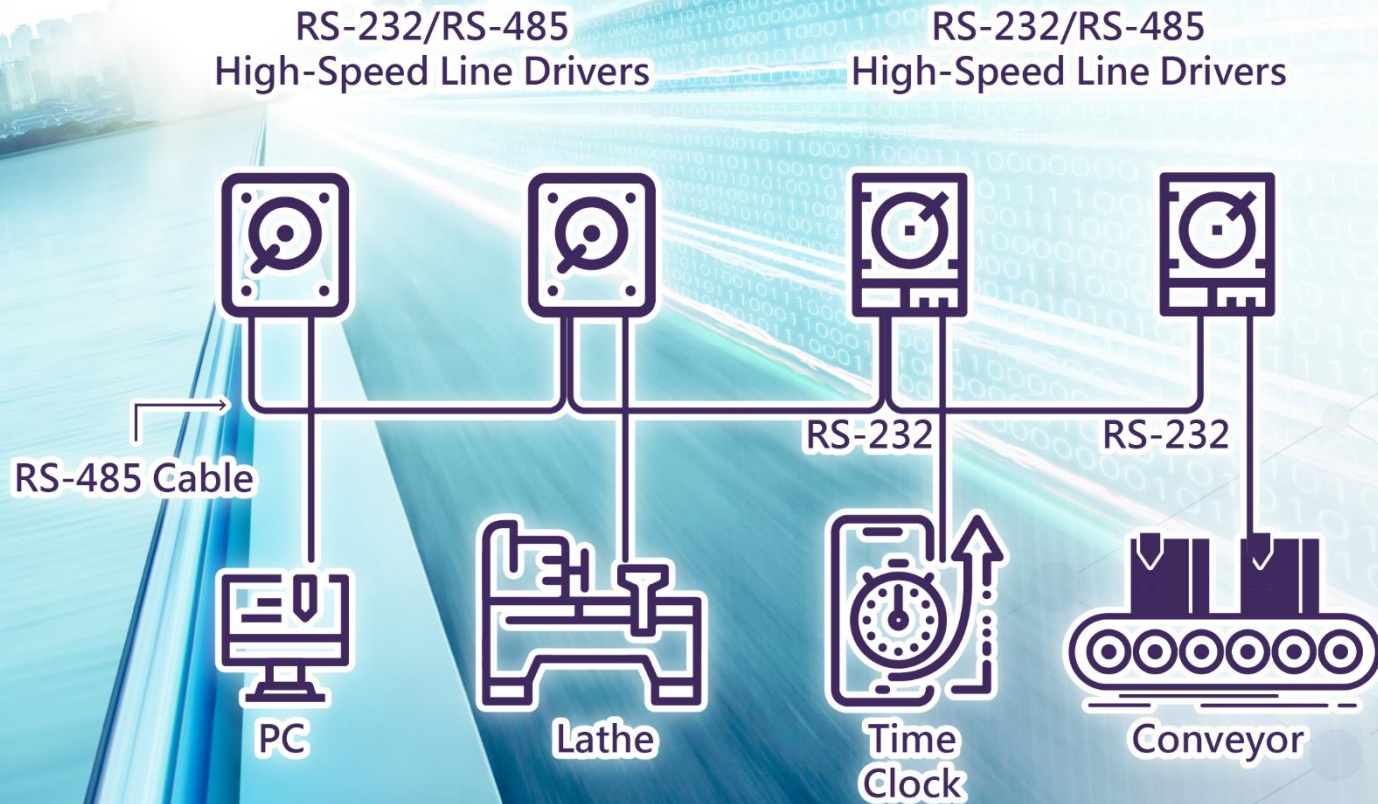
M.2 Type M

x16 PCIe slot

Dual Giga LAN

TCN/TCC

Extensibility



COM / x16 slot / 2.5G Lan(TSN for R680E only)

Support Page



✿ Portwell Website
<https://www.portwell.com.tw/>



✿ Major Contacts
No. 242, Bo-Ai Street, Shu-Lin Dist., New Taipei City 238, Taiwan
Phone: +886-2-7731-8888
Fax: +886-2-7731-9888

✿ Download Center
<https://www.portwell.com.tw/support-center/download-center/>

The background features a complex, abstract pattern of thin, glowing lines in shades of blue, green, and yellow, set against a dark, textured backdrop. A semi-transparent purple rectangular box is positioned on the left side of the image, containing the text.

Thank you
for watching!

Intel Legal Notice and Disclaimer

Intel technologies may require enabled hardware, software or service activation.

No product or component can be absolutely secure.

Your costs and results may vary.

Code names are used by Intel to identify products, technologies, or services that are in development and not publicly available. These are not "commercial" names and not intended to function as trademarks.

Intel is committed to respecting human rights and avoiding complicity in human rights abuses. See Intel's [Global Human Rights Principles](#). Intel's products and software are intended only to be used in applications that do not cause or contribute to a violation of an internationally recognized human right.

© Intel Corporation. Intel, the Intel logo, and other Intel marks are trademarks of Intel Corporation or its subsidiaries. Other names and brands may be claimed as the property of others.